



International Journal of Innovative Research in Science Engineering and Technology (IJIRSET)

(A Monthly, Peer Reviewed, Refereed, Scholarly Indexed, Open Access Journal)



Impact Factor: 8.699

Volume 14, Issue 6, June 2025

National Service Scheme (NSS) Portal

Samata Ravikeshar Khobaragade¹, Achal Manoj Padwekar², Shital Namdeo Lokde³,

Harshada Sanjay Dhawas⁴, Dr. Hirendra Hajare⁵

UG Student, Dept. of Computer Science and Engineering, Ballarpur Institute of Technology, Bamni Ballarpur,

Maharashtra, India¹⁻⁴

Associate Professor, Dept. of Computer Science and Engineering, Ballarpur Institute of Technology, Bamni Ballarpur,

Maharashtra, India⁵

ABSTRACT: The National Service Scheme (NSS) Portal is an innovative platform designed to provide comprehensive information about current and upcoming government schemes in India. The portal aims to enhance awareness and accessibility by offering direct links to official scheme pages, enabling users to easily explore and benefit from various government initiatives. By serving as a centralized hub, the NSS Portal fosters increased engagement with national welfare programs, promoting social development and inclusion. Through this platform, NSS aims to enhance engagement with the public welfare programs, bringing transparency, ease of access, and a higher level of awareness to users across India. This portal also includes notifications and updates to keep users informed about new schemes, important deadlines, and changes in policy. The all government schemes portal serves as a comprehensive platform for citizens to access information on various governmental initiatives, policies, and programs. Additionally, the portal may offer online application facilities, tracking services for submitted applications, and updates on the status of ongoing schemes. Overall, the government scheme portal aims to enhance transparency, accessibility, and efficiency in delivering public services to the citizens.

KEYWORDS: The portal includes features such as a Scheme Directory, which categorizes available government initiatives, and a one-click access link to official scheme websites, providing detailed information on the application process and eligibility criteria. The portal's user-friendly interface, coupled with powerful search and filter functionalities, ensures easy navigation and helps users quickly find the schemes that are most relevant to them.

I. INTRODUCTION

The National Service Scheme (NSS) Portal project is an initiative aimed at providing a unified online platform for managing and coordinating the various activities related to the National Service Scheme in India. It aims to promote social welfare and develop a sense of responsibility and community service. With the growth of government initiatives in the country, it becomes crucial to ensure that citizen are aware of these opportunities and easily access them. The NSS Portal has been developed to centralize this information and improve accessibility. This centralized platform provides detailed information on government schemes, facilitating the participation of a wider audience. From rural areas to urban centers, the portal allows users to engage with government initiatives in a seamless manner. It provides a centralized database to store information about their activities, and their progress. By consolidating a wide array of schemes onto a single platform, the portal streamlines information dissemination, making it easier for individuals to explore available option. This initiative reflects a commitment to transparency and inclusivity. In the National Service Scheme portal serves as a centralized platform to disseminate information and facilitate access to various welfare programs. These portals aim to streamline the process of understanding, and applying for schemes, ultimately empowering citizens to leverage government support for their benefit.

1.1 Aim and Objective

The main aim of the NSS Portal is to provide citizens with easy access to information about various government initiatives and to facilitate the application process for these schemes. These portals aim to promote inclusive growth, improve the quality of life, and empower citizens by providing them with the necessary support and resources. The NSS Portal is to provide an easily navigable and informative platform for Indian citizens, enabling them to explore, understand, and apply for government schemes. The objectives of the portal are:

1. **Centralized Information:** To bring together information on all current and upcoming government schemes in one place.
2. **Ease of Access:** To offer one-click access to official scheme websites and application forms.
3. **Enhanced Engagement:** To improve awareness and encourage citizens' participation in national welfare programs.
4. **Simplified Search and Filters:** To implement search and filter tools, making it easier for users to find relevant scheme based on their eligibility and region.
5. **Reduced Search Time:** These portals help citizens avoid the hassle of visiting multiple websites or departments to find information

II. RELATED WORK

The proposed work for the 'National service scheme portals' project involves developing a user-friendly web application. It will make the whole application process very easy. The portal will be updated with the latest schemes and people will be aware of all the schemes. Through this, the people will easily apply for schemes online by uploading various required documents, even sitting at their home. They can check their application status by logging into the system easily. This system maintains a trust between the government and the public, as everything will be transparent. This platform designed to help citizen search and discover government schemes, check eligibility, and apply for them. It Provide information on various educational schemes and initiatives launched and many ministries and departments also have their own portals dedicated to specific schemes related to their domain.

III. RESEARCH METHODOLOGY

The methodology section outlines the specific method and project research that help in various terms to execute the functionality to development of the national service schemes portal, the methodology involves several key steps:

3.1 Data Collection:

1.1 Data from APIs:

- Identified relevant APIs (Application Programming Interfaces) from sources. Understand the need for a centralized platform where users can easily access information about schemes.
- Collected accurate data from official portals, Categorized schemes under headers like Employment, Education etc. Developed scripts or application to automate data retrieval from APIs. Defined clear functional requirement such as scheme categorization, eligibility info, and external links to apply.

3.2 Platform Development:

The National Service Schemes portal platform aims to provide citizens with a centralized, user- friendly interface to discover, understand, and apply for various government schemes. Design the platform to handle a large number of users and schemes, ensuring smooth performance.

The platform should allow users to easily search and filter search and filter schemes based on their needs and eligibility criteria. Implement a mechanism to determine user eligibility for specific schemes based on their profile and provided information. Facilitate online application for eligible schemes, potentially integrating with relevant government portals or systems. Thoroughly understand the need of citizens, government agencies, and other stakeholders. Conduct comprehensive testing to ensure the platform is reliable, secure, and user- friendly.

1.1 Data Source Verification:

In the Data source verification on a national service schemes portal ensures the reliability and accuracy of information about government initiatives. This involves validating the data's origin, ensuring it's from official and authorized sources, and confirming its integrity through various checks. The first step is to confirm that the data originates from a legitimate and authorized source within the government. Once the source is verified, the data itself needs to be checked for accuracy and consistency. Data should be regularly updated to reflect any changed in the schemes, eligibility criteria, or other relevant information. The portal should also clearly indicate the last updated date.

3.3 The Adversarial Model and Assumptions:

In the Adversarial models, in the context of government scheme portals, refer to the strategies and techniques used to identify and mitigate potential threats, including fraud and malicious attacks, aimed at exploiting vulnerabilities in these systems. Assumptions about the behavior of potential attackers and the robustness of the system itself are crucial for developing effective countermeasures and ensuring the integrity and security of the portal. Adversarial model involve identifying potential threats like phishing, identity theft, data breaches, and fraudulent claims. This requires understanding how attackers might try to exploit the system, their motivations, and the tools they might use. It simulates attacks on the portal to assess its security posture. This includes techniques like red teaming and adversarial testing. It made about user behavior, including their level of technical expertise, their awareness of security risks, and their willingness to follow security protocols. Assumption is made about the sensitivity of the data stored on the portal, including personal information, financial data, and other sensitive information. This informs the level of security measures required to protect the data.

3.4 System Model

The system model for our project encompasses several essential components designed to provide users streamline access to government benefits and services, making them more efficient and user-friendly. These models utilize digital platforms to connect citizens with relevant schemes, offering features like eligibility checks, application assistance, and progress tracking. This serves as a comprehensive directory and gateway to various government scheme, departments, and services. Scheme discovery and Eligibility platform help citizen identify suitable schemes based on their profiles and needs. Application Assistances provide guidance on how to apply for schemes, often through online portals and digital processes. Tracking and Monitoring is allowing citizens to track the progress of their applications and access relevant information. Data driven insights utilize data analytics to disbursements, minimizing paperwork and delays. Promotes transparency in scheme implementation and reduces chances of corruption. Empower citizens to access their entitlements and participate in governance.

3.4.1 Architecture of Project Network

Our National Service Scheme portals system is designed to provide citizens with easy access to information about government programs and facilitate their participation. These portals are built using various functionalities (like scheme details, eligibility checks, application processes) are exposed as services. This modular approach allows for easy integration with different departmental system and promotes reusability of components. It also enables the development of micro services, allowing for independent scaling and updates of individual components.

In this project the user visit portal- The process begins when a user access your website. Selects a category – The user selects from various categories like: Farmers Health Education Employment. View list of schemes – After selecting a category, the portal displays all relevant schemes. Search if the user wants to narrow down option, they can apply search by keywords. Click on scheme – the user selects a particular scheme from the filtered list. View scheme details. The user is shown full details, including eligibility, benefits, and the official application link. Eligibility check If eligible: The user clicks “Apply Now” If not eligible: A message saying “Not eligible” is shown. Redirect to official site Eligible user is redirected to the respective official government website. Submit application- The user completes and submits the application there. Return to portal? After applying, the user may return to your portal.

3.4.2 Scheme Management Module

Portals provide a web-based user interface accessible across multiple devices (desktops, mobile devices). They often feature a search and discovery mechanism, allowing users to find relevant schemes based on their profiles and needs. Personalized dashboards and recommendations are also common, helping users navigate the portal and identify suitable schemes. In the database system that contains schemes, user data and other relevant information are stored in a structured database. Backend servers handle the processing of user requests, data validation and interactions with other systems. They are also used the integration layer to acts as a bridge between the UI and backend systems, facilitating communication and data exchange.

In this Architecture contain the single window Access to providing a centralized platform for accessing information and services related to various government schemes. Enabling seamless integration with departmental application and websites. Ensuring the portal is accessible to all citizens, including those with disabilities. Implementing robust security measure to protect user data and ensure confidentiality. The architecture should be able to handle increasing user traffic

and data volume. The portal should be designed to accommodate new schemes and functionalities as they are introduced.

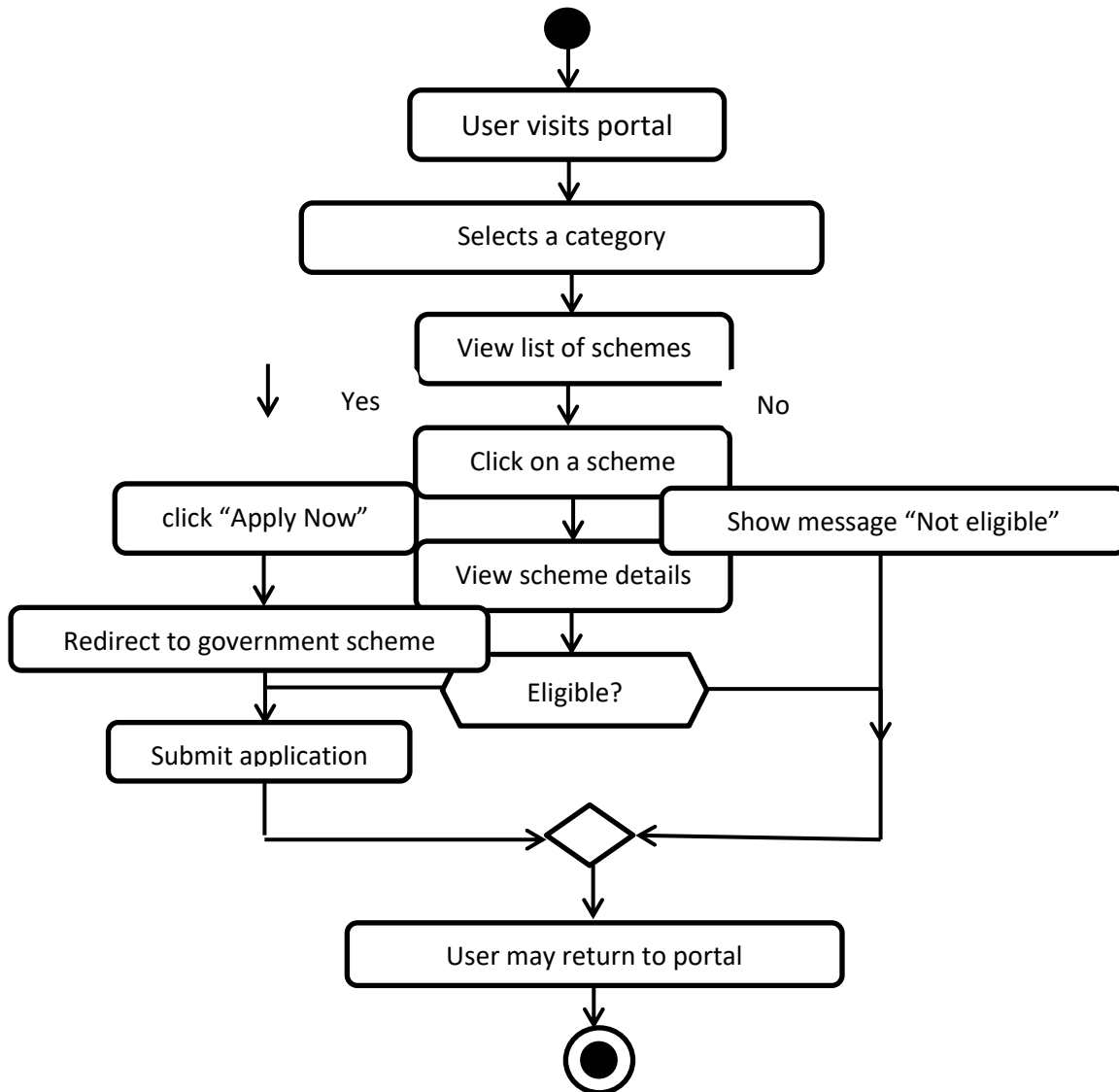


Figure: Workflow model diagram

IV. RESULT AND DISCUSSION

4.1 Results

The National Service Scheme (NSS) is a schemes portal, providing citizens with easy access to information, simplifying application processes. Users can fill out online applications, often with features like automatic data capture and form filling. Citizens can track the progress of their applications through the portal, ensuring transparency and accountability. Centralized portals improve access to government schemes, especially for those who may not be aware of all available programs. Users can Registration to sing up and create a basic profile with their age, education, profession, and interests. Data personalization is based on the profile, the system recommended relevant schemes or job posting. This portal organizes content by category (e.g., youth, farmers, and women) for easy navigation.

This portal has real time updates to admins regularly update the portal with new schemes, job recruitment, deadlines, and eligibility criteria. User can search based on region, qualification, benefits, or age group. Alerts are sent via email, SMS, or mobile app when a new opportunity matches the user's profile. Step by step instructions support to help users apply easily. The NSS portal is an innovative solution to a long-standing problem of accessibility and awareness of government program. It will play a significant role in promoting national welfare and inclusion. It is time consuming to research and apply to save the time. This portal clearly segmented into farmer, women etc. The application process direct official links for applying to schemes and regularly updated information with eligibility and benefit details.

Snapshots

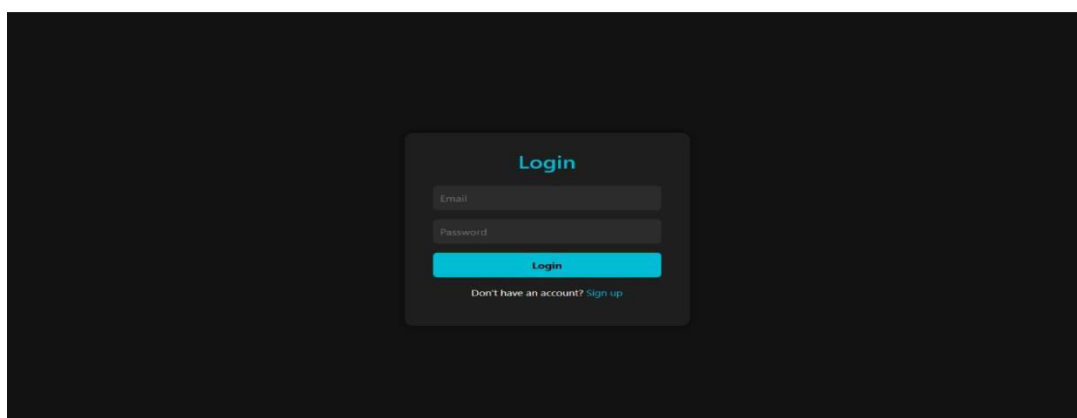


Fig 1. Login Page



Fig 2. Dashboard Page



Fig 3. Explore Scheme



Fig 4. Government Scheme

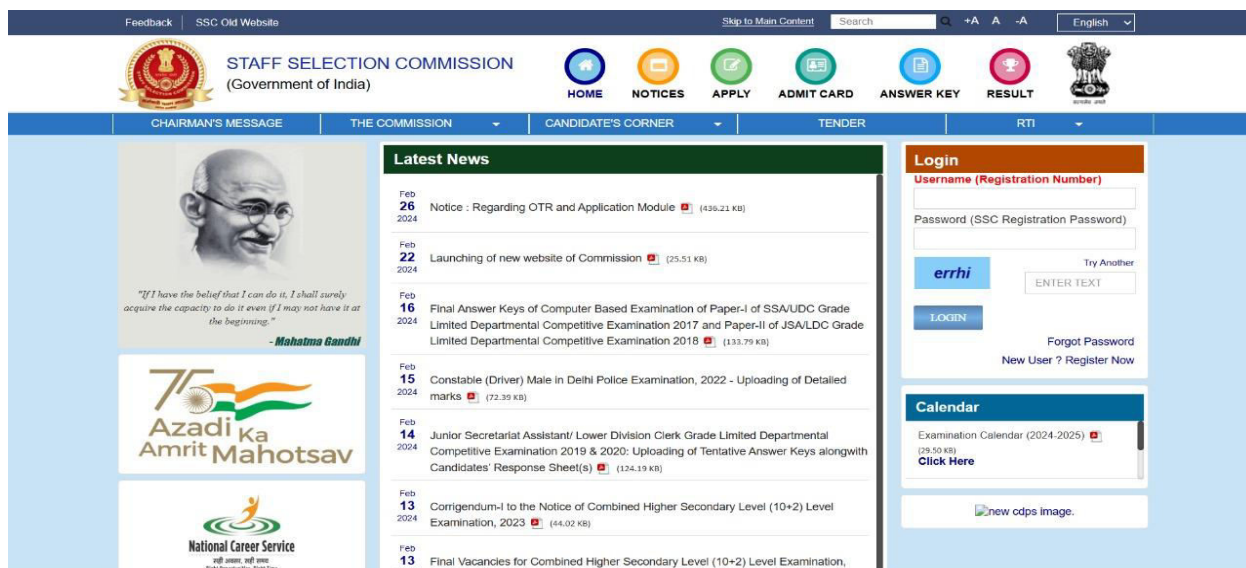


Fig 5. Scheme Details

V. CONCLUSION

The National Service Scheme (NSS) Portal is a comprehensive platform aimed at improving public engagement with government welfare schemes. By centralizing information and providing easy access to official resources, the portal will empower citizens to actively participate in government initiatives, enhancing social development.

The project successfully addresses the issue of fragmented information about government schemes by offering a user-friendly interface and powerful search and filter functionalities. By utilizing modern web technologies and cloud infrastructure, the NSS portal ensures that it can handle increasing user demand and deliver information reliably. Inserting, retrieving and updating the scheme details are easy when it is compared to the manual process. Maintaining the details in the database is manageable. The NSS Portal is a step toward modernizing public service programs, aligning with the digital transformation of governance. While technical challenges and the need for proper infrastructure must be addressed, the potential benefits- efficiency, transparency, and wider student participation- make the project a valuable investment. With continuous improvements and support, the NSS Portal can be a cornerstone for the future of volunteerism, encouraging the youth actively engage in nation-building efforts and fostering a culture of service and social responsibility. Evaluation and iterative improvement will be essential to ensure the portal remains responsive to evolving citizen need and advance the goal of equitable access to opportunities. Using this portal citizens can easily be aware about government schemes which are available for them and then take benefits of it.

ACKNOWLEDGMENT

We wish to express our profound appreciation to Dr. Hirendra Hajare, our esteemed project guide, whose expert guidance, unwavering support, and insightful feedback have been indispensable throughout the entirety of this research endeavor. Their dedication to fostering our intellectual growth and research acumen has been instrumental in shaping the direction and rigor of our study. Additionally, we extend our gratitude to the diligent members of our research team, whose collaborative efforts and tireless commitment have greatly enriched the project's outcomes. Their diverse perspectives, skills, and contributions have enhanced the depth and breadth of our research, fostering a collaborative environment conducive to innovation and excellence.

Furthermore, we would like to extend our sincere thanks to the participants who generously volunteered their time and expertise, contributing invaluable insights and perspectives to our study. Their willingness to share their experience and knowledge has enriched our understanding of the subject matter and has greatly enriched the quality of our research outcomes. We acknowledge the support of Ballarpur Institute of Technology for providing the necessary resources, facilities, and infrastructure that facilitated the successful completion of this research project. Their commitment to fostering a conducive research environment has been essential in our academic journey.

REFERENCES

1. [https://books.google.com/books?hl=en&lr=&id=4YVDEAAAQBAJ&oi=fnd&dq=National+Service+Scheme+\(S+Portal&ots=037wpItebe&sig=iOjPhT8U3ySS5R2ftREMKQoVQnw](https://books.google.com/books?hl=en&lr=&id=4YVDEAAAQBAJ&oi=fnd&dq=National+Service+Scheme+(S+Portal&ots=037wpItebe&sig=iOjPhT8U3ySS5R2ftREMKQoVQnw)
2. <https://nss.gov.in>
3. <https://yas.nic.in/national-service-scheme-0>
4. Government of India. (2022). National Service Scheme (NSS). Link
5. ASP.NET Documentation. (2023). Official documentation for ASP.NET Core. Link
6. SQL Server Documentation. (2023). SQL Server Developer Guide. Link
7. Azure Cloud Services Documentation. (2023). Introduction to Azure. Link
8. "Research on the E-Government scheme based on multi technology and bi-directional authentication" by Li Liangzhi IEEE 2008
9. Dwivedi, S. K., Bharti, A. K., "E-Governance in India – Problems and Acceptability", Journal of Theoretical and Applied Information Technology, 2010.
10. Web Accessibility Initiative. (2022). Web Content Accessibility Guidelines (WCAG) Overview.
11. Smith, J. (2019). Digital Government Portals: Best Practices and Challenges. Journal of E-Government Studies. Journal of E-Government Studies and Best Practices .Link

12. Taylor, R. (2017). Challenges in Implementing Online Government Services in Developing Countries. Development Informatics.
13. Smith, A. (2021). Understanding Cloud Hosting and Security.
14. Tech journal.



INTERNATIONAL
STANDARD
SERIAL
NUMBER
INDIA



INTERNATIONAL JOURNAL OF INNOVATIVE RESEARCH

IN SCIENCE | ENGINEERING | TECHNOLOGY

 9940 572 462  6381 907 438  ijirset@gmail.com



www.ijirset.com

Scan to save the contact details